

www.ecomanage.info

e-mail: coordination@ecomanage.info

Deliverable 2.3 / 2.4 / 2.5

Hydrodynamic and sediment transport model for the Bahía Blanca Estuary

ecomanage
INTEGRATED ECOLOGICAL COASTAL
ZONE MANAGEMENT SYSTEM



Ramiro Neves, PhD.
MARETEC — Marine & Environment Technology Center
Instituto Superior Técnico
Secção de Ambiente e Energia — Dep. De Mecânica

Avenida Rovisco Pais
1049 - 001 Lisboa PORTUGAL
Tel: (+351) 218 417 397
Fax: (+351) 218 419 423





DOCUMENTATION FORM		
DISSEMINATION LEVEL Public	DISTRIBUTION Partners	OBSERVATIONS
TITLE D2.3 - Calibration of the hydrodynamic model application - Bahía Blanca estuary D2.4 - Calibration of the sediment transport model application – Bahía Blanca estuary D2.5 - Hydrodynamic & sediment transport model - Bahía Blanca estuary		
KEYWORDS Bahía Blanca Estuary, historical data, hydrodynamics, sediments		
ABSTRACT This reports describes the calibration and validation of hydrodynamic and sediment model for the Bahía Blanca		
TASK LEADER HIDROMOD, Modelação em Engenharia, Lda Av. Manuel da Maia, nº 36, 3º esq. 1000-201 Lisbon Portugal Tel: +351 214211373 – Fax: +351 214211272 Email: hidromod@hidromod.com Webpage: www.hidromod.pt		
Funding This project received research funding from European Commission's Six Framework Programme – Contract nº INCO-CT-2004-003715 (Dec2004-Nov2007)		
AUTHOR(S) F J Campuzano, J O Pierini and P C Leitão		
VERIFICATION Coordination		
DATE 01/06/2008	NUMBER OF PAGES 22	REFERENCE NUMBER Project 227



Table of Contents

1	INTRODUCTION.....	4
2	GEOMORPHOLOGY.....	5
3	HYDRODYNAMIC DATA DESCRIPTION AND ANALYSIS.....	5
3.1	TIDES.....	5
3.2	CURRENTS.....	7
3.3	FRESHWATER INPUTS.....	8
3.4	ATMOSPHERIC INFLUENCE.....	9
4	HYDRODYNAMIC MODEL RESULTS.....	9
4.1	MODELLING GRIDS.....	9
4.2	TIDES.....	9
4.3	CURRENTS.....	11
4.3.1	Instantaneous currents.....	11
4.3.2	Residual currents.....	12
4.3.3	Currents Validation.....	13
4.4	WIND EFFECT.....	14
5	SUSPENDED SEDIMENT DATA ANALYSIS.....	14
6	BAHÍA BLANCA ESTUARY COHESIVE SEDIMENTS CONCEPTUAL MODEL.....	15
7	SEDIMENT MODEL RESULTS.....	17
8	DISCUSSION AND CONCLUSION.....	19
	REFERENCES.....	21



Hydrodynamics and Sediments in Bahía Blanca Estuary: Data analysis and modelling

F J Campuzano, J O Pierini and P C Leitão

1 Introduction

The Bahía Blanca estuary, as pointed by its name, is a bay or collection of bays located on the southern part of Buenos Aires Province (Argentina) on the uppermost terrace of the Argentinean Continental Shelf (ACS) according to the bathymetric division proposed by Parker et al (1997). The channels and bays with north-west to south-east orientation run through extensive tidal areas, namely from north to south: Principal Channel, where the main human settlements are located, Falsa Bay and Verde Bay. In the Principal Channel is located one of the most important deep water harbour systems of Argentina and though harbours and the navigation channel are dredged to a nominal depth of 13 m a tidal prediction model “is urgently required” for navigational security (Perillo and Piccolo, 1991).

The Principal channel has an elongated shape with a total length of 68 km, being 200 m and 3-4 km wide near its head and mouth, respectively (Aliotta and Perillo, 1987). The Principal Channel ends inland in a salt flat known as Salitral de la Vidriera. Falsa and Verde bays are also funnel shaped with total lengths around 30 km and around 4 and 6 km wide respectively.

In the studied area (Figure 1), average depth is around 10 m with a maximum value around 22 m. Intertidal areas counts for around 40 % of the domain represented in Figure 1. Due to this particularity, their influence both on water and sediment dynamics would be of great importance. In the nearby coastal area isobaths follow a NE-SW orientation (Pierini, 2007).

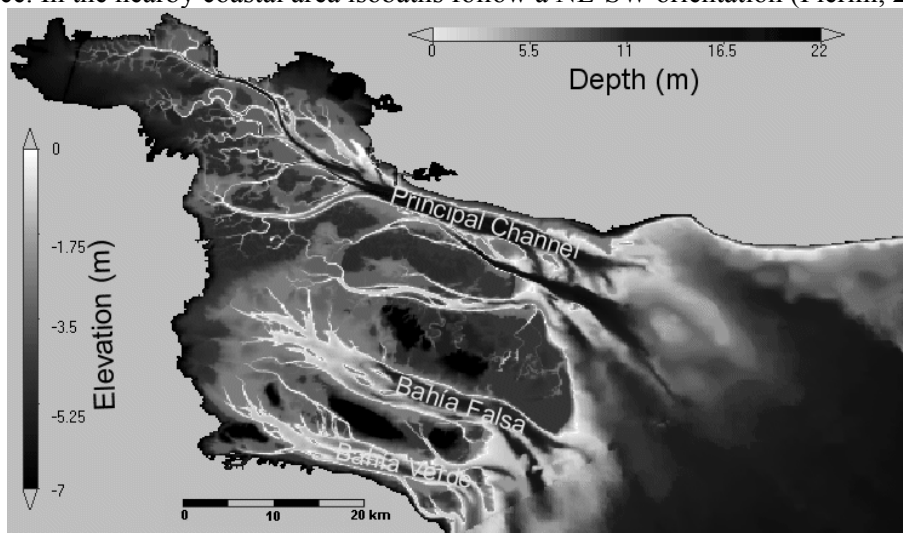


Figure 1 Bahía Blanca model domain bathymetry and elevation of intertidal areas.

Water circulation in Bahía Blanca estuary is mainly driven by tides, though its complex geometry and the prevailing winds produce deviations from the astronomical tides (Perillo and Piccolo, 1991; Palma, 1995; Etala, 2000).

Though it has been traditionally considered as an estuary in the literature (Piccolo and Perillo, 1990) nowadays, three creeks with low flow, Sauce Chico River, Napostá Grande creek and Maldonado creek, are the only superficial natural fresh water sources discharging into the Bahía Blanca bay innermost area (Heffner et al, 2003). As such, only this area where rivers discharge could be considered as a true estuary.



2 Geomorphology

The Bahía Blanca estuary is a dynamically active system where the main driving force that contributed to its formation is nowadays absent. Melo et al (2003) described the evolution of the Bahía Blanca area from 20000 years BP when the studied area consisted on a coastal plain that the Colorado River crossed on its way to the open ocean. The freshwater inputs began to grow a deltaic front that along with the increase on river flow and the mean sea level rise, by 6000 years BP, created the system of channels. From 5000 years BP, the partial decrease of the mean sea level along with the progressive migration to the south of the Colorado River and the migration north of other creeks decreased globally the fresh water inputs into the Bahía Blanca system. Those losses were compensated by the entry of oceanic water that led the system to the present situation. The Colorado River discharges nowadays south to the Bahía Blanca estuary with an average flow of $138 \text{ m}^3 \text{ s}^{-1}$. However it seems to have an insignificant influence on hydrodynamics or in sediments input into the system anymore (Cuadrado et al, 2002). Currently the only superficial natural fresh water sources at the present time in Bahía Blanca estuary are Sauce Chico River, Napostá Grande creek and Maldonado creek, which is formed by the junction of Saladillo de García and Dulce creeks (Heffner et al, 2003).

At present, the Bahía Blanca estuary is composed by three large interconnected parallel tidal channels with an NW-SE orientation, namely from south to north: Verde Bay, Falsa Bay and Principal Channel. To these bays arrive channels of all types and dimensions, form large straight tidal channels to meandering creeks and gullies (Ginsberg and Perillo, 2004). The main body of each bay is funnel shaped though their heads presents differences, Principal Channel is the only bay that receives freshwaters discharges and near its mouth swift from the funnel shape to a meandering channel. This main channel is connected mainly in its southern margin by other minor tidal channels through whose tides flow. On the other hand, Verde and Falsa bays' head act like a basin catchment where the different tidal creeks join. Nevertheless the system is on permanent evolution as was observed by Gingsberg and Perillo (2004) that detected a lateral migration on some tidal channels at a rate of 25 m yr^{-1} .

3 Hydrodynamic data description and analysis

3.1 Tides

In the Bahía Blanca estuary, tidal data are permanently collected in three different stations (Table 1, Figure 3) from the open ocean to the inner area of the Principal Channel are: Torre Mareográfica (hereafter TM), Puerto Belgrano Harbour (hereafter PB) and Ingeniero White Harbour (hereafter IW). Ten-minute water level timeseries for the three permanent tidal gauges were provided by the Bahía Blanca Port Consortium (CGPBB) for more than three years.

Table 1 Location, observed period and source of hydrodynamic and atmospheric data.

Station	Longitude	Latitude	Period	Source
TM	61°43'12" W	39°08'56" S	23/08/99 - 31/12/03	CGPBB
PB	62°06'15" W	38°53'48" S	23/08/99 - 31/12/03	CGPBB
IW	62°16'08" W	38°47'26" S	23/08/99 - 31/12/03	CGPBB
PR	62°04'00" W	38°53'00" S	01/01/01- 01/12/01	IADO
PC	62°03'09" W	38°56'40" S	17/03/97 – 21/04/97	SHN

The Bahía Blanca estuary is a mesotidal estuary (Piccolo and Perillo, 1990; Cuadrado et al, 2002; Ginsberg and Perillo, 2004), tidal range comprised between 2-4 m, averages performed on each tidal gauges water level data for the year 2000 show that tidal range average increases along the Principal channel from mesotidal to nearly macrotidal. Tides present a marked



difference between spring and neap tides, the former ranges can be increased by atmospheric processes such as wind and changes in atmospheric pressure.

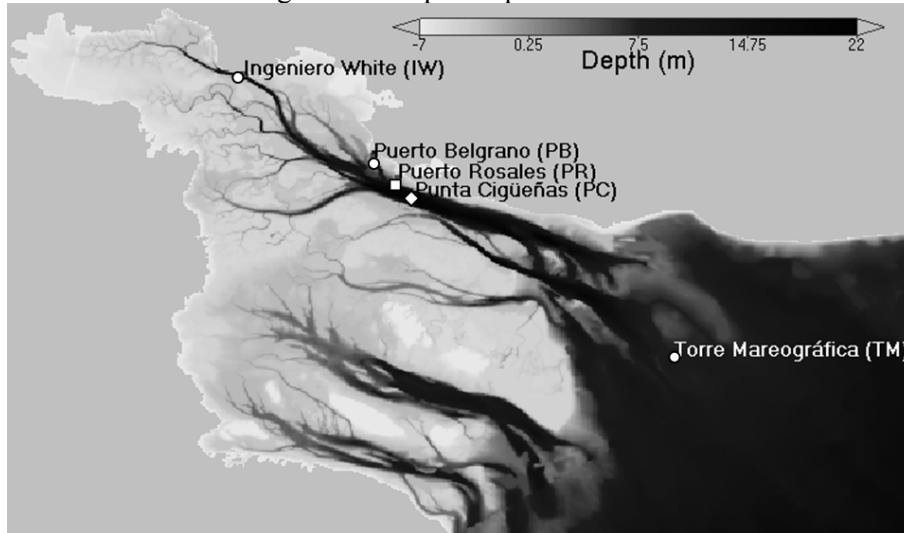


Figure 3 Location of the tides (circles), currents (diamond) and meteorological (square) observations in the Bahía Blanca estuary.

Harmonic analysis performed on the water level series using the POL/PSMSL Tidal Analysis Software Kit 2000 (TASK-2000) resulted on 62 tidal components for each tidal gauge. Observed and predicted with the tidal components water levels for each tidal gauge present a high coefficient of determination (R^2) from 0.87 for TM station to 0.91 for IW station.

Mean water level (Z_0) for the three permanent tidal stations shows a difference between the two most apart stations, distant 55 Km, of 0.70 m. This difference would be explained latter in the modelling chapter. In Table 2 are represented the tidal components of greater amplitude, the list is leaded in all the stations by the semidiurnal components, followed by the diurnal components which influence decreases headwards. The Formzahl coefficient (F) provides a quantification of the degree of influence of the semidiurnal and diurnal components. It consists in the division of the sum of the two main diurnal tidal components (K_1 and O_1) by the sum of the two main semidiurnal components (M_2 and S_2). According to the result of the F ratio tides can be considered diurnal ($F > 3$), semidiurnal ($F < 0.25$) or mixed ($0.25 < F < 3$). In Bahía Blanca the F ratio decreases while the tidal wave travels inside the estuary being of 0.26 at TM station and 0.19 at IW station. Tides in the Bahía Blanca estuary can be classified as semidiurnal being stronger this fact as the head of the estuary is approached.

Table 2 Principal tidal components for each tidal gauge (H=amplitude; ϕ = phase)

Tidal Component	Speed (deg/hr)	Puerto Ing. White		Puerto Belgrano		Torre Mareográfica	
		H (cm)	ϕ (°)	H (cm)	ϕ (°)	H (cm)	ϕ (°)
Z_0	0.000	263.544	0.000	245.635	0.000	193.273	0.000
M_2	28.984	169.123	186.072	153.523	177.906	115.864	157.094
L_2	29.528	25.475	255.364	22.471	245.987	15.977	220.692
N_2	28.440	23.983	103.593	21.080	95.833	15.239	76.690
M_4	57.968	22.764	178.277	16.141	184.234	6.396	171.968
S_2	30.000	21.589	307.350	20.632	298.669	16.843	274.215
K_1	15.041	21.151	61.178	21.481	54.527	20.345	45.066
O_1	13.943	15.528	0.701	16.186	355.431	15.426	344.967
MU_2	27.968	14.523	291.531	14.015	282.016	12.590	264.735
NU_2	28.513	10.954	137.915	9.637	130.029	7.632	113.261



As the tide heads inland the so-called compound tides or overtides (M_4 , MS_4 and MN_4) generated by nonlinear interaction of primary constituents become increasingly important. This effect takes place in shallow water areas where primary constituent are affected by non-linear processes, also increasing the tidal range. These new constituents are important on turbulence, tidal asymmetry and mean water level (Wang et al, 2002).

According to Wang et al (2002), tidal asymmetry can be assessed as a comparison of the amplitudes and phases of the dominant M_2 component with the overtide M_4 . A relative phase ($\phi=2\phi_2-\phi_4$) comprised between 0° and 180° indicates that a longer duration of the flood than the ebb, thus is flood-dominant and *vice versa*. After analysing the data for the three tidal gauges in Bahía Blanca, it can be observed an evolution from the flood-dominated coast to the ebb-dominated head. In Table 3 are summarised the values obtained for the years 2000-2003 analysis. The α parameter calculated as division of the M_4 amplitude by the M_2 amplitude indicates the degree of asymmetry, this parameter increases headwards due to a higher increase of the M_4 component compared to the M_2 increase, thus being the tide more asymmetric at the bay's head.

Table 3 Principal tidal components for each tidal gauge (H=amplitude; ϕ = phase)

	Puerto Ing. White	Puerto Belgrano	Torre Mareográfica
M_2 H (cm)	169.123	153.523	115.864
M_2 ϕ ($^\circ$)	186.072	177.906	157.094
M_4 H (cm)	22.764	16.141	6.396
M_4 ϕ ($^\circ$)	178.277	184.234	171.968
α	0.135	0.105	0.055
Phi	193.867	171.578	142.22

3.2 Currents

The dataset collected in Punta Cigüeñas oil pipe monobuoy (Figure 3, Table 1) by the Navy Hydrographical Service (SHN) consisting in current intensities and directions every 15 minutes during 35 days could be considered as the most representative available dataset in the Bahía Blanca estuary. Average values for the whole series is 0.64 m s^{-1} with a maximum intensity of 1.33 m s^{-1} and the directions are practically opposite pointing to 295° and 115° respectively (Figure 5). Ebb tide maximum velocities are slightly higher. In order to validate and calibrate the model for different periods, the harmonic components of the dataset were obtained for each component of the velocity using the TASK-2000 software. Component U intensity of the velocity almost doubles the V component, due to the Principal Channel orientation. Most important harmonic component for velocity is the M_2 that is responsible for more than 40% of tidal velocity followed by the N_2 component that represents an 8% of the intensity of the currents. Only tides are able to explain an 82% of the total variability of the currents found during the sampling period, the rest of the variability could be due to changes on mean sea level and atmospheric effects.

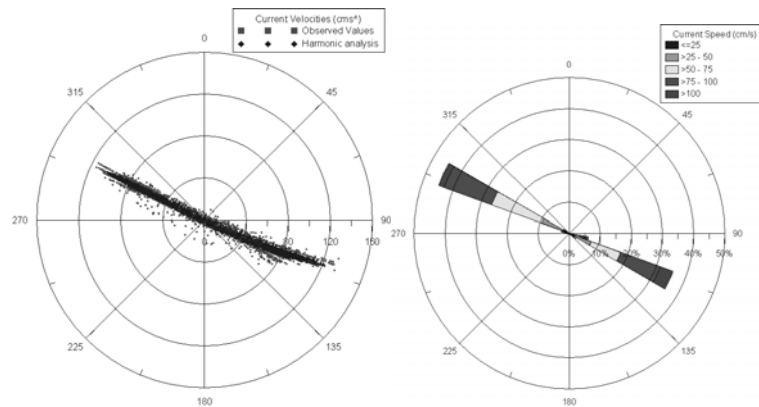


Figure 5 Current intensities and directions observed and obtained through harmonic analysis for the same period (Left) and observed current values analysis (Right)

3.3 Freshwater inputs

Main natural fresh water inputs in the Bahía Blanca estuary are located at the innermost part of the Principal Channel. Basically, only Sauce Chico River and Napostá Grande creeks have a considerable discharge in the study site (Heffner et al, 2003) with averaged annual flows of 5.80 and 2.675 m³s⁻¹ respectively. Nevertheless, high runoff peaks have been registered, for instance in the Sauce Chico River has being observed several times discharges over 50 ms⁻¹ (Perillo and Piccolo, 1991). Though both rivers spring is located in Sierras de la Ventana mountain range, both catchments areas are not subjected to the same processes and present different peaks along the year. Sauce Chico River presents two main peaks, one during autumn (Feb-Jun) and a stronger one during spring (Aug-Dec). However, Napostá Grande Creek flow shows peaks in winter (Apr-Aug) and spring (Aug-Dec), both with similar intensities. The spring peak on both sources corresponds to the rainiest period on the Bahía Blanca region. Sauce Chico presents a flow pattern very influenced to the local rain pattern on Bahía Blanca region while Napostá is more influenced by the precipitation near Sierras de la Ventana (Piccolo et al, 1987). Figure 6 shows the monthly averaged flow from data collected during the 1993-1999 period provided by Aguas Bonaerenses Sociedad Anónima (ABSA). There are other creeks flowing into the Bahía Blanca estuary, as Galván, Saladillo de García and Maldonado creeks with an overall flow lower than Napostá Grande creek itself (Piccolo et al, 1987).

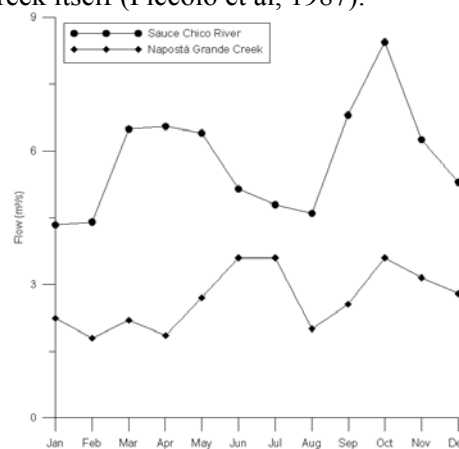


Figure 6 Napostá Grande Creek and Sauce Chico rivers monthly averaged flow.



3.4 Atmospheric influence

The SMN (National Meteorological Service, on its Spanish acronym) (1985) in Capelli and Campo (2004) described the study area as dominated by the pressure systems from the west and southwest and the presence of a semi permanent high pressure over the south-western Atlantic centred at 30°. The circulation around the western edge of the anticyclone results on strong winds from the NW and N. When winds blow from NW produce lower water levels than predicted by the astronomical tides, in the other hand when wind blows from SE water are piled up in the inner areas of the bay increasing the water level. The latter phenomenon is locally known as *sudestadas*. According to Perillo and Piccolo (1991) and Piccolo and Diez (2004) the predominant winds from N and NW produced an advance of the low water time, a delay on the high water time and reduced the predicted levels both for high and low tide.

Thirty minute data observed at Puerto Rosales meteorological station (Table 1, Figure 3) by the IADO for the period January–November 2001 showed prevailing winds blowing from northern sectors, mainly from the north and northeast. Maximum intensity recorded on this period was 23.2 ms⁻¹ and an average value of 6.2 ms⁻¹. During most of the time intensities do not surpass 10 ms⁻¹.

4 Hydrodynamic model results.

The achievement of a validated hydrodynamic model would serve for applications that would aid in coastal management and would serve as part of the DPSIR approach. The MOHID hydrodynamic model (<http://www.mohid.com/>) was used to force a Bahía Blanca 2-Dimensional domain model covering the study site. The most relevant characteristic is the order of magnitude of the horizontal and vertical dimensions, in our study case the horizontal extent is of 70 km while the average depth is of 10m.

4.1 Modelling grids

To study the different hydrodynamic processes involved in Bahía Blanca two different spatial scales covering the main area of interest were adopted with different resolutions: 0.01° and 0.002° horizontal step covering from the coordinates -61.41W, -39.38 S to the inner estuary (Pierini, 2007), hereafter referred as LoRes grid and HiRes grid respectively. The main interest in developing different resolutions has been to study different process in diverse detail according to the available data and to maximise the model runtime.

Bathymetric data used for composing the different model domains come from the GEBCO digital atlas, a one minute global bathymetric grid database (IOC, IHO and BODC, 2003) and from CGPBB data with a waterline obtained after evaluating 6 sets of Landsat 5 TM and Landsat 7 ETM data resulting in a high density bathymetry (50 m x 50 m) (Pierini, 2007).

4.2 Tides

Tide enters each bay of the Bahía Blanca estuarine system by its southern margin finding all the channels reduced in width and most of the intertidal areas emerged. As the tide advances, water starts to cover the intertidal area amplifying the submerged area. As a result of the interaction of the tidal wave with the shallow depths of the channels, overtides importance increase. Maximum tidal amplitudes are thus found at the innermost areas for each of the three different channels, absolute maximum was found in Principal Channel. During high tides, the connections between the three different bays reach their maximum width favouring water



exchange between bays. When the tidal wave retreats, water scours from the inundated intertidal areas through tidal channels into the main channels, the time to evacuate those waters is long and so this process is still occurring when a new tidal wave is entering the system as can be appreciated on the last image of the sequence (Figure 8). Due to the vicinity of the TM tidal gauge to the boundary of the Bahía Blanca domain, the model forcing consisted in imposing those tidal components along the entire coastal open boundary.

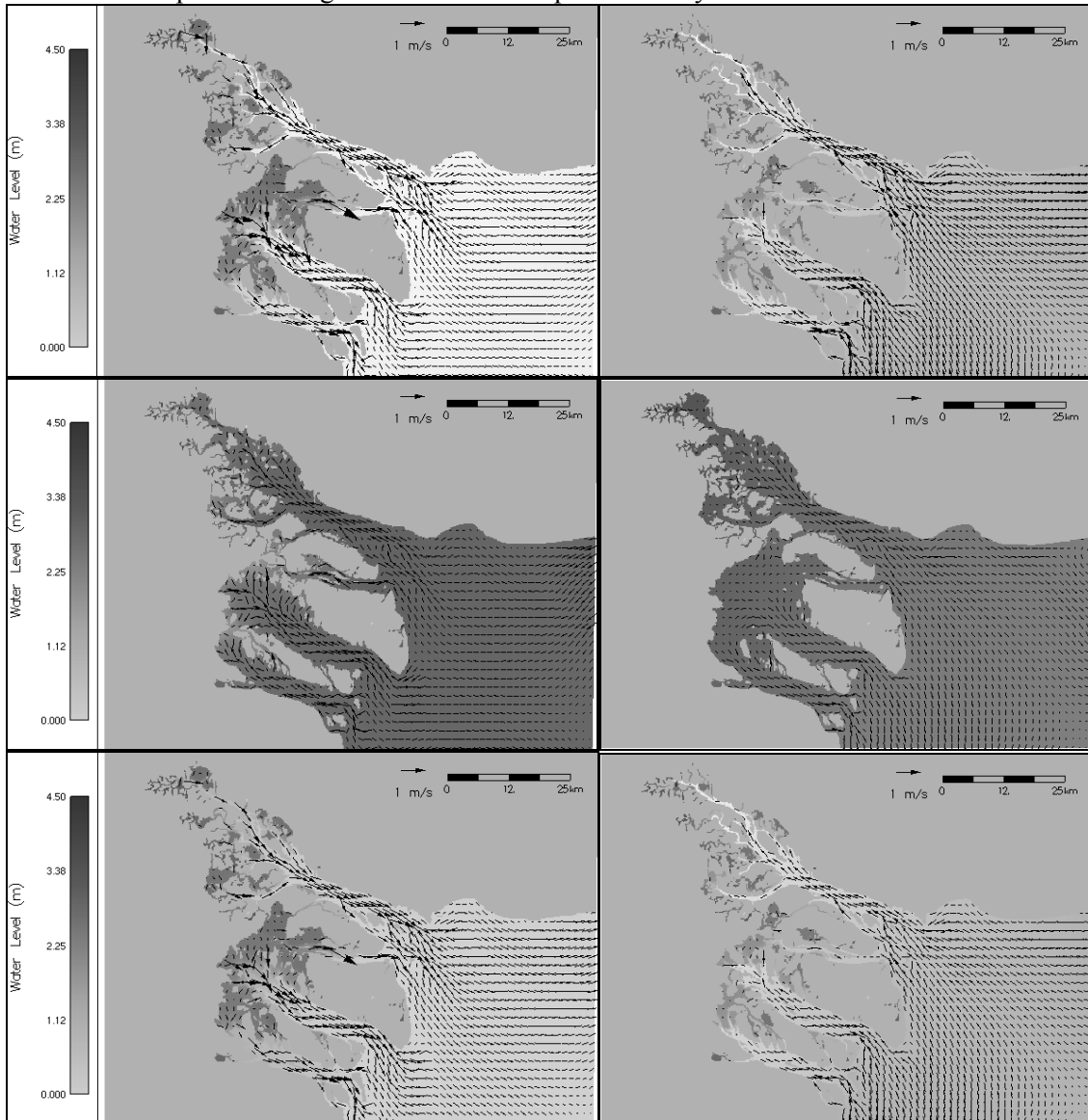


Figure 8 Water levels for the HiRes domain during a period of 12 hours.

Bahía Blanca Estuary Principal Channel mean sea level as was described on the data analysis presented a permanent sea level difference of 70 cm between the most distant tidal gauges. That tidal amplification was not able to be explained by the increase of mean sea level due to tidal dumping. Using simultaneously validation of the water levels and the currents intensities at Punta Cigüeñas (PC) station it was concluded that using the mean sea level of the outermost station, TM, the right quantity of water was not entering the system, as the obtained currents at that station were reduced compared to the observations. On the contrary, when adding these 70 cm to the mean sea level of the TM station both water levels and current intensities at PC station presented a high coefficient of determination.



Applying these conditions to the model, correlations between the expected water levels due to astronomical tides and model results obtained were performed obtaining correlation coefficients over 0.93 (Table 4). To further evaluate the comparison between the observed tidal levels obtained through harmonic analysis with the predicted levels obtained through modelling, the additional indicators suggested on Willmott (1982) would be assessed (Table 4).

Table 4 Model performance indicators at each tidal gauge.

Station	Torre Mareográfica	Puerto Belgrano	Puerto Ing. White
Correlation (r)	0.985	0.987	0.966
Coef. Determination (r^2)	0.971	0.974	0.933
MB	-0.048	0.104	-0.054
RMSE	0.162	0.220	0.369
Skill	0.992	0.991	0.981

Mean bias (MB) indicates the averaged difference between the observed and predicted values. Predicted amplitudes varies in (bias/total amplitude*100) 1.37, 2.35 and 1.08 % of the total amplitude at TM, PB, and IW stations respectively. Root Mean Square Error (RMSE), standard deviation, is the square root of the variance which represents that 95% of the model predictions do not differ (in absolute value) from the observations by more than $2 \times \text{RMSE}$. The skill index intended to be a descriptive measure, and is both a relative and bounded measure which can be widely applied in order to make cross-comparisons between models. It provides similar information than the coefficient of determination, in the sense that gives a measure of the model performance, but it penalises models with greater bias. If the skill index is 1 the model presents an optimal predictive skill. Skill values for each station are close to one, indicating a high degree of model performance.

4.3 Currents

Currents on Bahía Blanca estuary are mainly caused by tides. In addition, the importance of the geomorphology in the tidal asymmetry is reflected in the residual currents. Tidal currents at the mouth of the estuary are the result of the cumulative processes of the outer general circulation and the distortion produced by the estuary hydrodynamics. Flood velocities are generally larger than the ebb velocities outside the estuary due to the direct relationship between velocity and depth.

4.3.1 Instantaneous currents

The Principal channel, according to Piccolo et al (1987), is dominated by ebb currents, maximum superficial values are 0.80 ms^{-1} and 1.40 ms^{-1} for flow and ebb currents respectively. Very similar values were obtained by Gómez et al (1996) integrating vertically the observations, with values of 1.05 ms^{-1} and 1.30 ms^{-1} for flow and ebb respectively. In the coastal area, measurements obtained during a the Austral campaign in 1993 observed maximum velocities of 0.6 ms^{-1} with velocities over 0.3 ms^{-1} surpassed during more of the 30 % of the time (Cuadrado et al, 2002).

Model results (Figure 9) present an ebb-dominated inner estuary in opposition to a flood-dominated coastal area in agreement both with the relative phase values (ϕ) obtained in Section 3.1 and with Cuadrado et al (2002). In Verde Bay maximum values are found near its mouth due to channel the ebbing waters, in Falsa Bay in addition to the mouth it presents maximum values near its head in the region where water from the surrounding intertidal area scours and in the Principal Channel values are intense along the main axis of the channel.

During flood the high intensities on the three bays are located along each main channel slowly covering the intertidal areas where velocities relax. During ebb along the main axis of the Principal Channel values are comprised between 0.7 ms^{-1} and 1.4 ms^{-1} , being found the



maximum values near the upper reaches, maximum values of similar intensity are observed in Falsa Bay near its head and near the mouth of Verde Bay. On the three bays, velocities during ebb tide are higher than during flood. Low intensities are mainly found in the higher reaches of the intertidal areas. During flow water piles up in the entry of the channels, being observed intensities of nearly 1 ms^{-1} in the mouth and average intensities along the channels axis of 0.4 ms^{-1} on average. Peak velocities observed on the model on the intertidal areas during flow are generally under 0.3 ms^{-1} . It can be concluded that the model agrees with the principal features described on the literature.

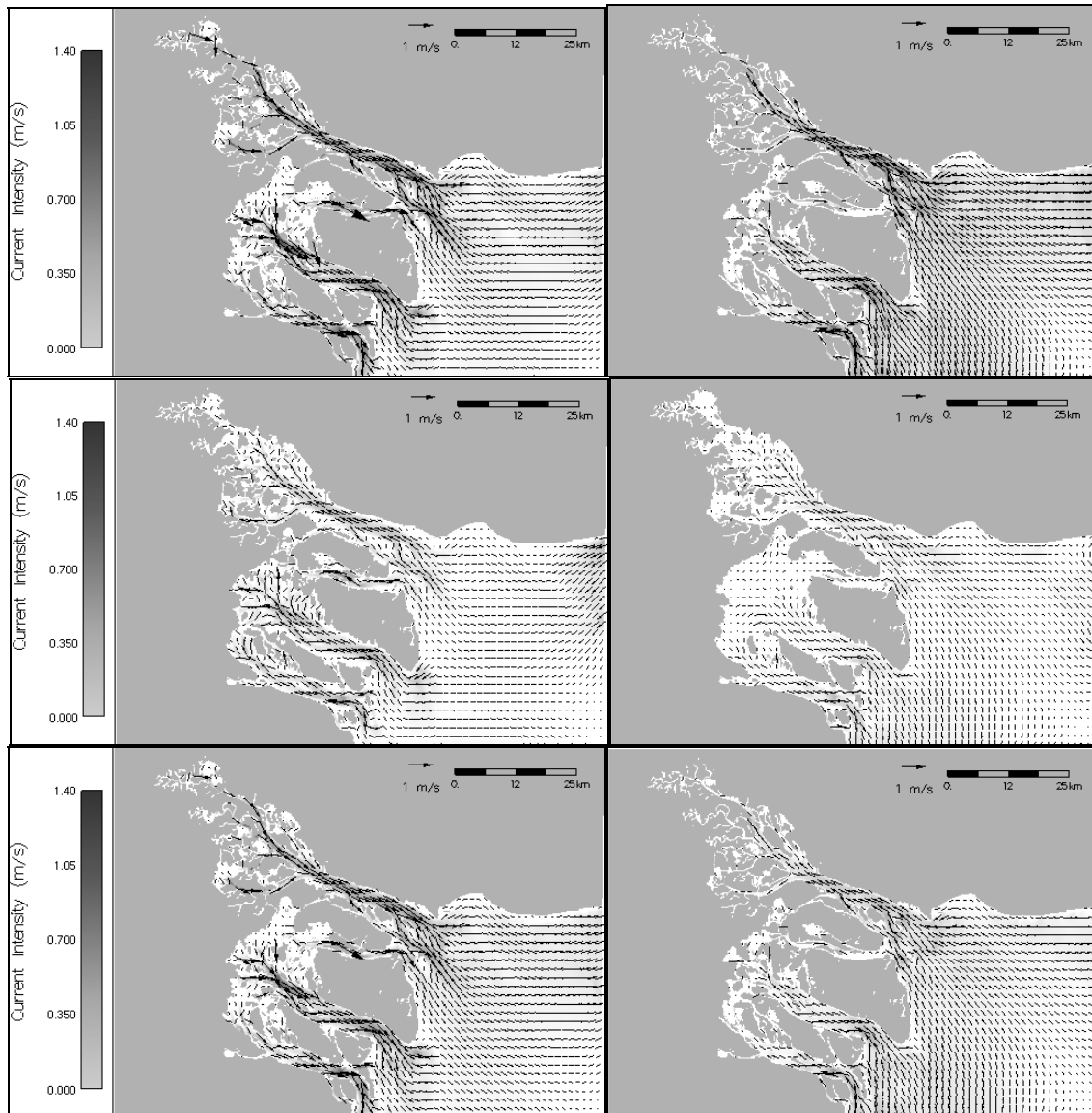


Figure 9 Instant velocities for a 12 hour period in the Bahía Blanca estuary HiRes domain.

4.3.2 Residual currents

The residual currents are a significant factor regarding the import and export of dissolved and particulated properties of the estuarine system. Two different residuals are relevant in terms of characterising the estuary, namely residual flux velocity and residual velocity.



The residual flux velocity is calculated by the vertical integration of the specific residual water fluxes occurring during a defined period and is expressed in ms^{-1} and influences the transport of dissolved properties in the water column (i.e. nutrients). Figure 10 Top present results corresponding to a month simulation average. As was pointed by Perillo et al (1987) and Pierini (2007) in the head of Principal Channel net transport in deeper areas is seawards, while in shallower waters is landwards. The model reproduces this pattern. In the mouth of the Principal Channel due to its particular geomorphology with channels crossing intertidal areas can be observed a recirculation pattern. As a consequence the dissolved components would be transported into the intertidal areas and recirculated in the Principal Channel mouth retarding their export to the open ocean.

The residual velocities are the net velocities obtained after balancing currents in different directions and they are of particular importance regarding particulate matter transport such as sediments. The most remarkable results (Figure 10 Bottom) are the net transport from the intertidal areas into the main channels. It can also be found a recirculation pattern at the mouth of the Principal Channel. According to these results the intertidal channels would be exporting sediments and other particulate matter into the main channels favouring erosion processes in the intertidal areas, though some recirculation at the Principal Channel mouth would slow down the sediments release into the coastal area (Pierini, 2007).

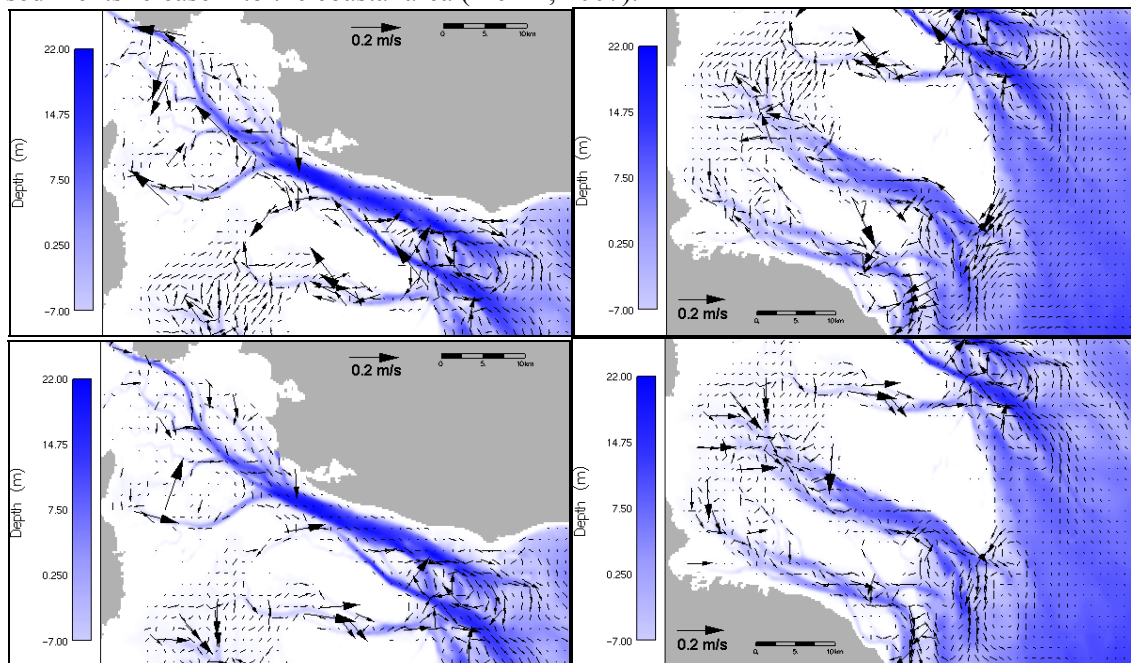


Figure 10 Residual flux velocity (Top) and Residual velocity (Bottom) in the inner (Left) and the outer (Right) area of the Bahía Blanca estuary.

4.3.3 Currents Validation

Mainly tidal currents validation has been performed in the centre of the Principal Channel in the vicinity of the Punta Cigüeñas (PC) buoy (Figure 3, Table 1). After adding 70 cm to the mean sea level observed in TM station, it has been found that the model is able to reproduce the current intensities and directions (Figure 11). The coefficient of determination obtained when comparing both intensities is 0.72. In the HiRes domain this value increases till 80%. Model results and observed values present maximum peaks of intensity around 1.30 ms^{-1} during ebb conditions and nearly 1 ms^{-1} during flood conditions.

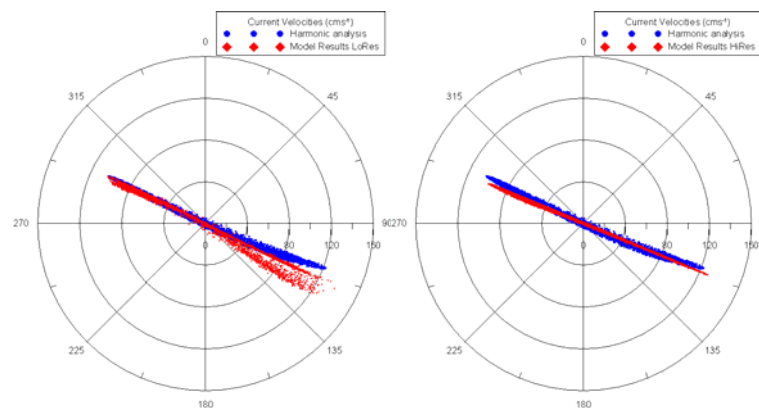


Figure 11 Intensities and direction/s of the currents in Punta Cigüeñas stations obtained through harmonic analysis (dots) and modelling (diamonds) for LoRes and HiRes domains..

4.4 Wind effect

In order to study the effect of wind over the water levels observed, a month was simulated with different wind conditions. According to data analysis performed by Cuadrado et al (2005), predominant directions are NW, NNW and SE with a velocity range between 5 and 10 ms⁻¹. A reference simulation with no wind was used to compare with simulations forced with constant wind conditions of 10 ms⁻¹ coming from different directions (N, NW, S & SE). Maximum differences occur at the higher reaches of the estuary when winds blow along the Principal Channel axis, piling up water when it blows from the south and decreasing water levels when it blows from the north. In Table 5, mean sea levels are summarised for the three tidal stations analysed on this study.

Table 5 Wind direction and resulting mean sea level for each tidal gauge.

Wind Direction	Torre Mareográfica	Puerto Belgrano	Puerto Ing. White
No Wind	1.93	1.93	1.94
North	1.84	1.64	1.62
Northwest	1.83	1.67	1.54
South	2.03	2.22	2.34
Southeast	2.01	2.25	2.44

5 Suspended Sediment data analysis

Despite the relevance of sediments accretion-erosion processes in the evolution of the geomorphology and hydrodynamics suspended sediment data for the Bahía Blanca estuary are scarce and neither the origin of the sediments on the water column has been clearly determined. On the socio-economic point of view the importance resides on the need to maintain the nominal depth of 13.7 m for port sites and navigational channel (Perillo and Sequeira, 1989). The CGPBB dredges around 300,000 m³yr⁻¹ in a 2 km stretch of El Toro Channel to maintain a 10 m nominal depth.

Sediments balance is related to accumulation or erosion processes also connected to the residual velocities. In the same sense, Ginsberg and Perillo (2004) concluded that the duration of asymmetry controls the trend of erosion in the channel system while the velocity asymmetry is responsible for the net sediment transport. Flow asymmetries characterized by shorter flood duration and higher flood current maximum (flood dominance) induces landward directed sediment transport while shorter fall periods and greater ebb current maximum (ebb dominance) cause net outward sediment transport (Lanzoni and Seminara, 2002).



The lack of sediments major point sources into the system due to the reduced river flow and the little contribution from the open ocean implies the channel margins and intertidal areas should be regarded as the main source of sediments (Perillo and Sequeira, 1989; Ginsberg and Perillo, 2004). They considered sediment transport controlled by the degree of tidal asymmetry and trends on erosion governed by the degree of time asymmetry. According to Perillo and Cuadrado (1990) an erosion process is undergoing in the study area, sediments are eroded from the channel margins for being eventually exported into the continental shelf. The materials affected are mainly very fine sand in a 38%, silt (37%) and clay in a 25 %. Being the sand transported as bedload and the others in suspension (Aliotta et al, 2004).

As occurs with hydrodynamics, wind direction and intensity has an effect on suspended sediments on the estuary. Perillo and Cuadrado (1990) found in the nearby coastal area, northeast of Bahía Blanca estuary mouth homogeneous sediments concentrations between 70 and 90 mg l^{-1} with north wind that reduced around 10 to 20 mg l^{-1} when wind rotated to SSE direction. The origin of those sediments was found related to the Bahía Blanca sediment plume.

The Austral campaign on November 1993 covered the coastal vicinity of the Bahía Blanca showing a clear sediment front along the coastal area of the Bahía Blanca estuary (Figure 12, left) also observed in recent satellite (Figure 12 right). In the Austral campaign, maximum concentrations over 60 mg l^{-1} are related to the Principal Channel while coastal values are comprised between 20 and 25 mg l^{-1} in agreement with values estimated by Cuadrado et al (2002). According to determinations done by NEDECO-ARCONSULT (1983) referred in Perillo and Sequeira (1989), mean values for the middle reach of the estuary, the area nearby Ing. White harbour, are around 90 mg l^{-1} . In the vertical, sediments concentrations present a nearly homogeneous distribution being the main factor influencing the observed concentrations the distance from the coast. Due to this fact a 2D model would be used to simulate the sediment transport and to test different hypothesis of the origin and fate of the cohesive sediments.

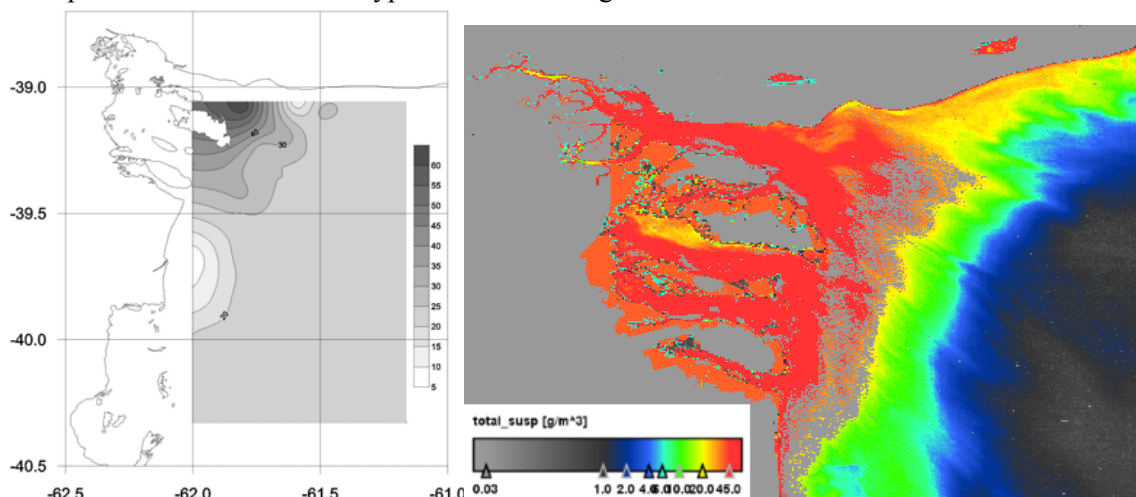


Figure 12 Total suspended matter observed on the outer area of Bahía Blanca estuary measured during the Austral campaign at the surface in mg l^{-1} (left) and MERIS satellite image dated on the 10/08/2004 (right).

6 Bahía Blanca estuary cohesive sediments conceptual model.

Based on model tests, historical data and a bibliographic survey, the conceptual model to be test stands that water column sediments are resuspended during the high tides on the tidal flats and transported to each bay's main channel (Figure 13). In this manner, erosion is taking place



due to the sediment loss into the open ocean though the erosion process is a slow process. This theory would also explain the wide ranges of values for turbidity and sediments in the inner areas of the system where tidal flats occupy larger areas in comparison with the main channel. Thus depending on the stage of the tidal cycle when the day is collected and on the wind conditions, data would change considerably on the inner stations with maximum values are up to six times larger than minimum values observed.

The 0.01° resolution grid was forced by the TM station tidal components taking into account the difference on the mean sea level. In the seabed it was assumed initially two different potencies for the cohesive sediment layer. The intertidal area is considered as the main contributor of sediments to the water column, with a total thickness of available sediment of 0.2 m, on the other hand sediments on the channels and deeper areas were considered with a total thickness of 0.05 m that would undergo the erosion and deposition processes. The sediments were also divided on a total of 15 layers; the first 8 were defined empty to allow consolidation of sediments, the next five represented each a 15% of the total sediments and the last two consisted on the 12.5% of the total sediments.

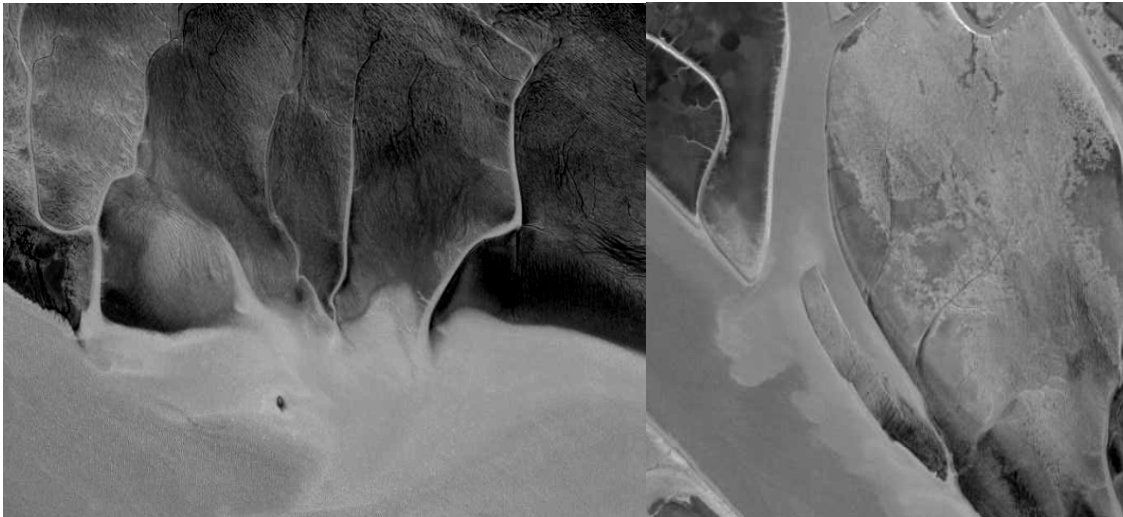


Figure 13 Sediments loads from the intertidal areas into the Principal Channel of the Bahía Blanca estuary (Google Earth Captures).

In addition, different critical shear stress profiles were considered on the intertidal and submerged areas. Sediments on the bottom of the channels were considered to be harder and also requiring higher stress intensity for sediments resuspension. For the submerged area it was considered an exponential increase of critical shear stress from 60 to 125 Pa while for the intertidal it was considered a homogeneous value of 1.35 Pa. The equations governing the erosion and deposition processes that would modify the original values are described on the Chapter *Mohid Water a marine numerical lab*.

The values assigned to the erosion and depositon parameters have been taken from those published by Perillo and Sequeira (1989) to model the cohesive sediment transport in the middle reach of the Bahía Blanca Estuary (Table 6). The settling velocity was computed by NEDECO-ARCONSULT (1983) as $1.25 \cdot 10^{-3} \text{ ms}^{-1}$. Perillo and Sequeira based on the work of Hayter (1985) calculated a value for the first centimetre of new deposited mud of 0.225 Nm^{-2} . The same authors assumed that mud characteristics were similar than in San Francisco Bay where Mehta (1985) obtained a value of 0.1 Nm^{-2} . In this study it was used a dry density for the sediment of 2300 kgm^{-3} . To calibrate our model different values for the erosion rate parameter has been evaluated choosing finally a value of $1 \cdot 10^{-5} \text{ kgm}^{-2}\text{s}^{-1}$.



Those conditions are defined for the interface of the sediment with the water, also known as the fluff layer. Under this layer a 3D sediment model that would provide this layer of sediments when they are eroded was deployed.

Table 6 Parameters used to model the erosion and deposition of cohesive sediments.

Parameter	Symbol	Value	Source
Critical shear erosion	τ_E	0.225 Nm^{-2}	Perillo and Sequeira, 1989
Erosion rate	E	$1 \cdot 10^{-5} \text{ kgm}^{-2}\text{s}^{-1}$	
Critical shear deposition	τ_{cd}	0.1 Nm^{-2}	Perillo and Sequeira, 1989
Constant settling velocity	w_s	$1.25 \cdot 10^{-3} \text{ ms}^{-1}$	Perillo and Sequeira, 1989
Manning coefficient		0.020	

The model boundaries are forced by the two rivers Napostá Creek and Sauce Chico River as the unique land source of sediments with a constant concentration of 25 mg l^{-1} , though varying monthly their flow, and a constant value for the ocean boundary of 21.6 mg l^{-1} (Cuadrado et al, 2002). Also an initial value of 50 mg l^{-1} was considered as the concentration on the water column for the entire system.

7 Sediment model results

The Bahía Blanca model, using the assumptions described above, was ran for a period of five years until the bottom sediments and the water column concentrations stabilised followed of a four year simulation. A series of stations (Figure 14) running along the Principal Channel of Bahía Blanca Estuary was selected to evaluate the defined sediment model reaction to the forced hydrodynamics.

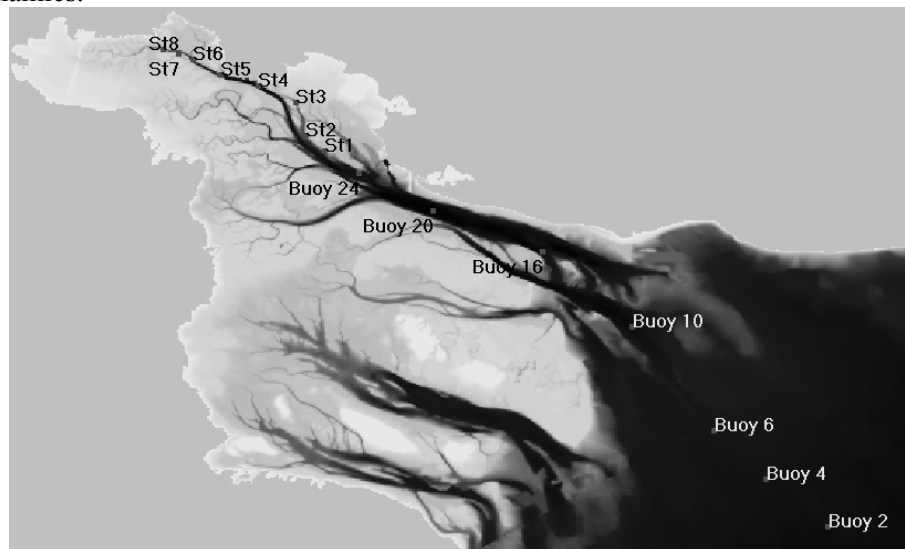


Figure 14 Location of the monitoring stations in the Bahía Blanca estuary model.

The model results show a decrease in suspended sediments from the head to mouth of each bay. Sediments are resuspended during the flood and transported through the intertidal channels into the main channels of each bay during the ebb tide. During the ebb tide, maximum concentrations are reached in the water column. During spring tides the range of sediment concentrations on the water column is wider than during neap tides. The influence of spring and neap tides is detected even in the most distanced station Buoy 2. The transport of these sediments off each channel produces a sediment front along the Bahía Blanca coast (Figure 15). This feature was noticed in the MERIS satellite image (Figure 12, right) with similar concentrations to the observed on the model results.



Figure 15 Cohesive sediments concentration (mg l^{-1}) in the water column during flood (left) and ebb tide (right).

The average values for the three year simulation depicted in Figure 16 follow a spatial distribution where in the innermost estuarine area cohesive sediment concentrations are stable while seawards concentrations steadily decreases reaching constant values on the open ocean area. The maximum value is found Station 3 due to its location in a narrow channel surrounded by intertidal areas parallel to the Principal Channel.

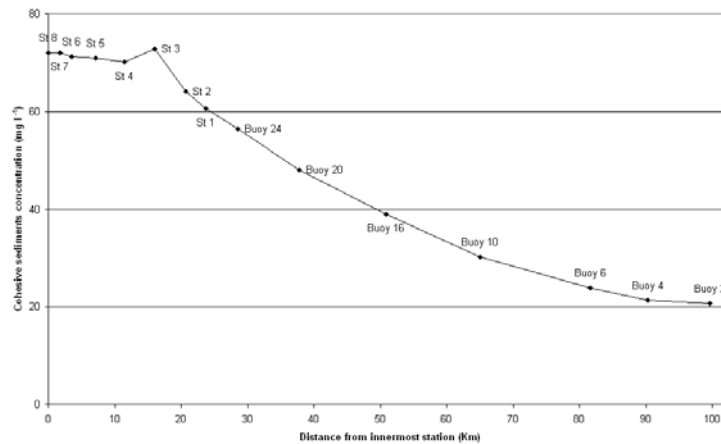


Figure 16 Averaged values for four years simulation in each of the model monitored stations along the Principal Channel main axis.

According to our model results, the Falsa Bay due to its particular geomorphology presents the highest registered values. During ebbing tides, sediments from all the tidal channels converge increasing its concentration. Unfortunately, data to calibrate and validate for the other bays that form the estuarine system along with the Principal Channel simply do not exist.

In terms of sediment erosion, a comparison in sediment height performed between the initial and last instant of the last three years simulation period, shows that the Bahía Blanca estuary is under an eroding process in agreement with Perillo and Sequeira (1989). Erosion mainly takes place on the sides and heads of the tidal channels while it has not been found an area with significant deposition. In agreement with the results presented above the head of the Falsa Bay is the area that presents a higher degree of erosion.

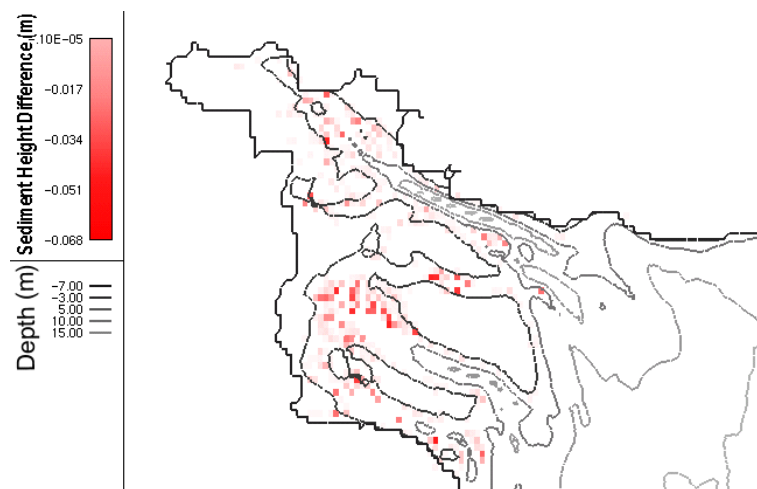


Figure 17 Sediment height difference between the last three years simulated years with an erosion rate of $1e-5 \text{ kgm}^{-2}\text{s}^{-1}$.

8 Discussion and conclusion

The Bahía Blanca estuary is the most important deep water harbour systems of Argentina and to maintain its navigability it needs of periodical dredging due to the permanent erosion action by the action of tides enhanced by the action of wind and waves.

In order to evaluate the possible impacts due to the dredging and the rejection at the disposal areas, navigation security, waste water discharges trajectories among other applications it is very important to gain knowledge of system dynamics. In an estuary composed with a high ratio of intertidal areas, hydrodynamics would be very sensible to the water level variations. Due to this importance during the present study, the sources of variations in water level have been identified, analysed and quantified for the Bahía Blanca estuary.

The main contributor to the system hydrodynamics are the astronomic tides, as the fresh water sources are scarce in flow, explaining more than 85% of the water level variation. However other atmospheric phenomena as pressure and wind can provoke modifications in water elevations.

Though the circulation in the Bahía Blanca estuary has been described as dominated by a semidiurnal, quasi-stationary tidal wave (Serman (1985) in Piccolo and Perillo, 1990; Perillo and Piccolo, 1991; Pierini, 2007) is a tide governed estuary. The tidal wave travels from the south and enters each of the bays by the southern margin. The particular geomorphology of the Bahía Blanca estuary produces the increase of the overtides components which produce the tidal amplitude increasement. As an effect, tides evolves from the outer ocean from flood dominated to ebb dominated increasing this dominance with the distance from the mouth. As a result greater current intensities are found during ebb for each of the bays. Maximum values during ebb tide are found near the mouth of the estuary where water collected by the system of channels meet and near the head where all the intertidal areas load the collected water and along the main axis of the channel. During flood maximum values are found near the mouth of the bays where water entering piles up. On the other hand minimum values are found on the elevated intertidal areas.

One of the greatest advantages of using modelling tools in integrated coastal zone management is that datasets collected at different periods and sampling intervals can be all joined in a tool to reproduce periodical phenomena, i.e. tides, currents. Also modelling allows isolating and discriminating single processes from all the available information. Data



modifies the conditions of the model though model results can provide a feedback for the accuracy and validation of the data. For these reasons models should not only be regarded only as data “consumers” tools as they also are able to test the available data consistence.

In the Bahía Blanca case, modelling served to confirm an inconsistency on the MSL used for the TM station. In this case, the simultaneous use of observed water levels and currents, though they were not for the same period, and the posterior mathematical analysis and validation through an hydrodynamical model resulted on the conclusion that mean sea levels for the tidal gauge stations need calibration. This is one of the major outcomes of the present work.

The model hydrodynamics indicate a residual circulation into the head of the tidal channel of dissolved properties on the contrary tidal channels export particulated matter. This fact is relevant for water quality and sediment studies. Dissolved properties would tend to accumulate on the innermost areas of the channels while sediments would be washed away. The latter phenomena would be relaxed in the Principal Channel due to the recirculation pattern found at its mouth. These features are also in agreement with the lagrangian test performed where tracers located in the innermost area of the Principal Channel presents longer residence times.

Though more detailed work should be performed in this matter, the model seems to respond to wind forcing as the literature have described. Water levels increase in the inner areas when winds blow from the south-southeast sector and decrease on average when they blow from the opposite direction. This effect is more intense when the wind blow along the bays main axis.

In this chapter it has been established a conceptual sediment model where due to the absense of external sources of sediments, the sediments found on the water column have their origin in the Bahía Blanca estuarine system. Tidal currents transport the eroded sediments from the channel flanks into the Principal channels (Perillo and Sequeira, 1989). These sediments would be transported by the ebb currents and exported into the adjacent coastal shelf forming a sediment front along the Bahía Blanca coast along with the exported sediment from the other bays of the Bahía Blanca estuarine system.

Some assumptions were made in order to achieve the present results. The intertidal areas were considered the main source of sediments into the system with a potency of sediments available higher than in the inundated areas. The inundated areas were a residual source of sediments more compacted that would need higher stresses to be eroded, while in the intertidal areas the stress needed would be lesser and constant with the sediment depth. This 3-dimensional geomorphologic model was forced by a 2-dimensional vertically averaged hydrodynamical model with a resolution of 0.01°.

The results obtained through the simulations agree in general with the conceptual model and the analysed data. The model has been validated mainly in the Principal Channel of the Bahía Blanca due to the lack of data for the rest of the system. Cohesive sediments concentrations decrease steadily from the innermost area of the channel to the open ocean. The decrease on sediment concentrations is mainly due to the concentration of intertidal areas in the inner areas of the channel while the proportion of these areas is lesser mouthwards. In its mouth, the Principal Channel, Falsa Bay and Verde Bay formed a sediment and hydrodynamic front that is more intense during ebb tides, enhanced by the spring tides period which indicates net erosion in the system.



References

- Aliotta S, Perillo G M E (1987). A sand wave field in the entrance to Bahía Blanca Estuary, Argentina. *Marine Geology*, 76: 1-14.
- Aliotta S, Lizasoain G O, Ginsberg S S (2004). Dinámica sedimentaria y evolución morfológica de un profundo canal del estuario de Bahía Blanca. *Revista de la Asociación Geológica Argentina*, 59(1): 14-28.
- Capelli de Steffens A, Campo de Ferreras A M (2004). Climatología. In: Piccolo, M.C. y m. S. Hoffmeyer, (Eds.) *Ecosistema del Estuario de Bahía Blanca*, pp.79-86.
- Cuadrado D G, Piccolo M C, Perillo G M E (2002). Hydrography of the inner shelf offshore Bahía Blanca Estuary, Argentina. *Thalassas*, 18(1): 45-56.
- Cuadrado D G, Gómez E A, Ginsberg S S (2005). Tidal and longshore sediment transport associated to a coastal structure. *Estuarine, Coastal and Shelf Science*, 62: 291-300.
- Etala P (2000). Modelos hidrodinámicos anidados para el cálculo de la onda de tormenta en el estuario de Bahía Blanca. PhD Thesis, Universidad de Buenos Aires, pp: 131
- Ginsberg S S, Perillo G M E (2004). Characteristics of tidal channels in a mesotidal estuary of Argentina. *Journal of Coastal Research*, 20(2): 489-497.
- Gómez E A, Ginsberg S S, Perillo G M E (1996). Geomorfología y sedimentología de la zona interior del canal principal del estuario de Bahía Blanca. *AAS Revista*, 3(2): 55-61.
- Hayter E J (1985). Estuarial sediment bed model, in *Estuarine Cohesive Sediment Dynamics*, edited by A J Mehta. Springer-Verlag, New York: 326-359.
- Heffner M, Bodnariuk P, López F, Vaschetti G (2003). "Aportes de agua a la Ría de Bahía Blanca." Ed. Comité Técnico Ejecutivo Municipalidad de Bahía Blanca pp 9
- IOC, IHO, BODC (2003). Centenary Edition of the GEBCO Digital Atlas. Published on CD-ROM on behalf of the Intergovernmental Oceanographic Commission and the International Hydrographic Organization as part of the General Bathymetric Chart of the Oceans; British Oceanographic Data Centre, Liverpool. Online: <http://www.ngdc.noaa.gov/mgg/gebco/gebco.html>
- Lanzoni S, Seminara G (2002). Long-term evolution and morphodynamic equilibrium of tidal channels. *Journal of Geophysical Research*, 107(C1): 1-13
- Mehta A J (1985). Characterization of cohesive sediment properties and transport in estuaries, in *Estuarine Cohesive Sediment Dynamics*, edited by A J Mehta. Springer-Verlag, New York: 290-325.
- Melo W D, Schillizzi R, Perillo G M E, Piccolo M C (2003). Influencia del área continental pampeana en la evolución morfológica del Estuario de Bahía Blanca. *AAS Revista*, 10(1): 39-52.
- NEDECO-ARCONSULT (1983). Estudio de dragado del canal de acceso al Puerto de Bahía Blanca, informe final (technical report), 3 volumes, Buenos Aires.
- Palma E D (1995). Modelo matemático hidrodinámico de circulación con contorno variable. Desarrollo y aplicaciones. PhD Thesis, Universidad Nacional del Sur, (inedited), pp: 178.
- Parker G, Paterlini M C, Violante R A (1997). The sea floor. In: E. Boschi, (Ed.), *El mar argentino y sus recursos pesqueros*. Instituto Nacional de Investigación y Desarrollo Pesquero. Mar de Plata, República Argentina: 65-88.
- Perillo G M E, Piccolo M C, Arango JM, Sequeira M E (1987). Hidrografía y circulación del estuario de Bahía Blanca (Argentina) en condiciones de baja descarga. 2º Congreso Latinoamericano sobre Ciencias del Mar. 95-104.
- Perillo G M E, Sequeira M E (1989). Geomorphologic and sediment transport characteristics of the middle reach of the Bahía Blanca Estuary (Argentina). *Journal of Geophysical Research*, 94(C10): 14351-14362.
- Perillo G M E, Cuadrado DG (1990). Nearsurface suspended sediments at Monte Hermoso Beach, Argentina: I. Descriptive characteristics. *Journal of Coastal Research*, 6(4): 981-990.
- Perillo G M E, Piccolo M C (1991). Tidal response in the Bahía Blanca Estuary, Argentina. *Journal of Coastal Research*, 7(2): 437-449.
- Piccolo M C, Perillo G M E, Arango J M (1987). Hidrografía del estuario de Bahía Blanca, Argentina. *Revista Geofísica*, 26: 75-89.



- Piccolo M C, Perillo G M E (1990). Physical Characteristics of the Bahía Blanca Estuary (Argentina). *Estuarine, Coastal and Shelf Science*, 31: 303-317.
- Piccolo M C, Diez P G (2004). Meteorología del Puerto Coronel Rosales. In: Piccolo, M. C. y M. S. Hoffmeyer, (Eds.) *Ecosistema del Estuario de Bahía Blanca*, pp.87-90.
- Pierini J O (2007). *Circulación y transporte en zonas costeras del estuario de Bahía Blanca*. PhD Thesis, Universidad de Buenos Aires, (unedited), pp: 225.
- Wang, Z B, Jeuken M C J L, Gerritsen H, de Vriend H J, Kornman B A (2002). Morphology and asymmetry of the vertical tide in the Westerschelde estuary. *Continental Shelf Research*, 22: 2599-2609.
- Willmott, C J (1982). Some comments on the evaluation of model performance. *Bulletin of the American Meteorological Society*, 63(11): 1309-1369.